

Keyword:

Form Saved Time: 5/13/2009 1:36:00 PM

Upload Time: 5/13/2009 1:35:00 PM

Start Time	5/13/2009 9:50:14 AM
Stop Time	5/13/2009 11:50:12 AM
Elapsed Time	1:59:58
Interval	0:00:08
Readings (All, Intervals, Events)	1083 / 721 / 400
Logging Setup	Setting when uploaded: 4%
Session Name	Recording 12

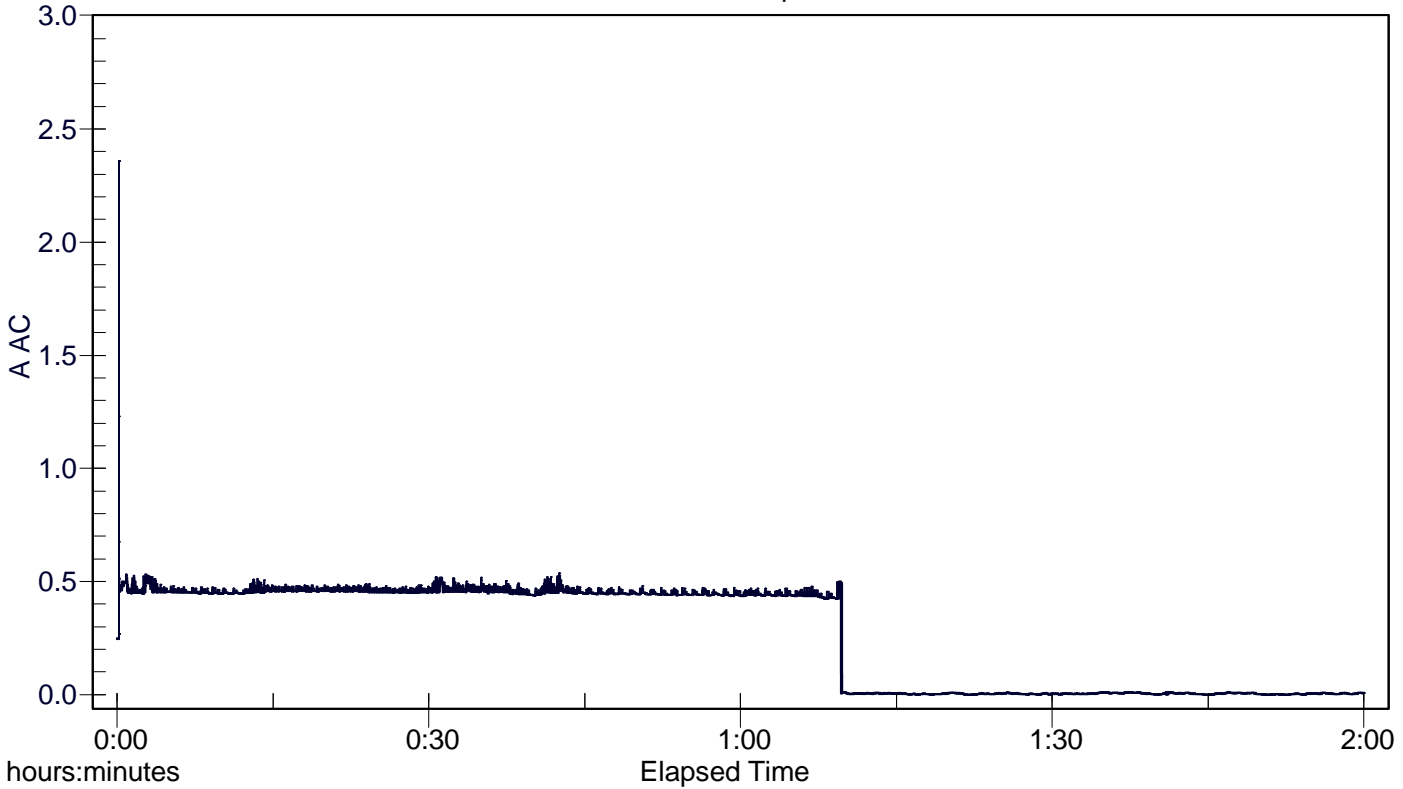
Test Purpose:

Compute UPS runtime for greenStation system using a common 650 VA UPS.

	Max Time	Max	Average	Min	Min Time
	9:50:22 AM	2.3587 A AC	0.2645 A AC	0.0000 A AC	11:31:20

Graph Name:

Show Data: All Graph View: All



Comments
greenStorage NAS, 4 x 250GB drives, RAID 0, Windows XP Professional. APC Back-UPS ES 650 from fully charged to automatic shutdown

A	Sample	Start Time	Duration	Max Time	Max	Average	Min Time	Min	Description	Stop Time
1	0.2471 A AC	9:50:14 AM	0:00:08.0	9:50:14 AM	0.2471 A AC	0.2468 A AC	9:50:21 AM	0.2466 A AC	Stable	9:50:22 AM
2	0.2684 A AC	9:50:22 AM	0:00:00.1	9:50:22 AM	0.2684 A AC	0.2684 A AC	9:50:22 AM	0.2684 A AC	Unstable	9:50:22 AM
3	2.3587 A AC	9:50:22 AM	0:00:00.1	9:50:22 AM	2.3587 A AC	2.3587 A AC	9:50:22 AM	2.3587 A AC	Interval	9:50:22 AM
4	1.2293 A AC	9:50:22 AM	0:00:00.7	9:50:22 AM	1.2293 A AC	0.6757 A AC	9:50:23 AM	0.5150 A AC	Unstable	9:50:23 AM
5	0.5082 A AC	9:50:23 AM	0:00:01.5	9:50:24 AM	0.5137 A AC	0.5077 A AC	9:50:25 AM	0.4960 A AC	Stable	9:50:25 AM
6	0.4800 A AC	9:50:25 AM	0:00:02.2	9:50:26 AM	0.4893 A AC	0.4780 A AC	9:50:27 AM	0.4609 A AC	Stable	9:50:27 AM
7	0.4583 A AC	9:50:27 AM	0:00:05.5	9:50:31 AM	0.4696 A AC	0.4659 A AC	9:50:27 AM	0.4555 A AC	Interval	9:50:32 AM
8	0.4684 A AC	9:50:32 AM	0:00:09.6	9:50:36 AM	0.4828 A AC	0.4660 A AC	9:50:39 AM	0.4606 A AC	Stable	9:50:42 AM
9	0.4932 A AC	9:50:42 AM	0:00:00.5	9:50:42 AM	0.4932 A AC	0.4851 A AC	9:50:42 AM	0.4787 A AC	Interval	9:50:42 AM
10	0.4974 A AC	9:50:42 AM	0:00:10.0	9:50:45 AM	0.4996 A AC	0.4963 A AC	9:50:43 AM	0.4805 A AC	Interval	9:50:52 AM
11	0.4986 A AC	9:50:52 AM	0:00:10.1	9:50:52 AM	0.4986 A AC	0.4983 A AC	9:51:01 AM	0.4981 A AC	Interval	9:51:03 AM
12	0.4981 A AC	9:51:03 AM	0:00:00.6	9:51:03 AM	0.5171 A AC	0.5013 A AC	9:51:03 AM	0.4980 A AC	Unstable	9:51:03 AM
13	0.5250 A AC	9:51:03 AM	0:00:01.1	9:51:03 AM	0.5250 A AC	0.5147 A AC	9:51:04 AM	0.5050 A AC	Stable	9:51:04 AM